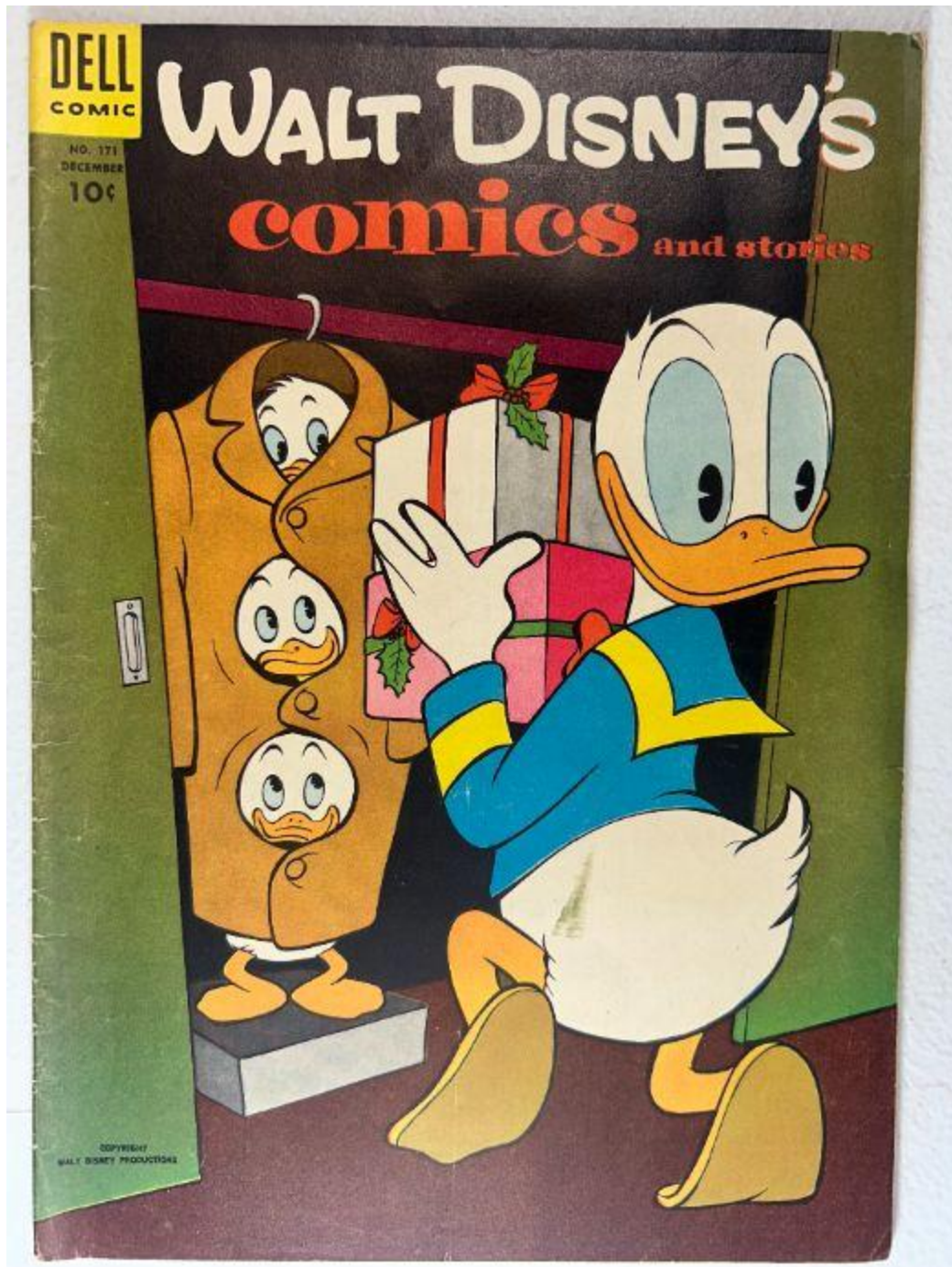


■ **Walt Disney's Comics and Stories – Vol. 15 No.3
(December 1952)**

Evaluation Date: April 3, 2026



SUMMARY OF OBSERVATIONS

This comic retains the front cover, back cover, centerfold, and all photographed interior pages. Overall visual presentation is strong, with the front cover exhibiting vivid color saturation and retained surface gloss. Interior pages display clear artwork with consistent age-related toning. The spine remains continuous and intact, showing fine cracking and a mild roll.

Condition issues are present but localized. The spine exhibits **fine vertical cracking** and a **slight roll** without long splits. Some interior pages show **darkening along the fore-edge**, most noticeable near the front of the book. Staples are present and embedded, showing **surface oxidation** without clear evidence of rust migration. The brittleness test image shows a **single page gently flexed**, forming a smooth arc with no visible fiber fracture on the lifted page.

This issue is a **holiday-themed December issue**, featuring Christmas imagery on the cover. Holiday issues of *Walt Disney's Comics and Stories* are commonly noted by collectors for their seasonal presentation and are frequently included as focal points within complete volume runs.

FRONT COVER — OBSERVATIONS

Walt Disney's Comics and Stories – Vol. 15 No. 3 (December 1952)

Photo Condition & Quality:

Image is sharp and evenly lit, with edges, corners, and spine clearly visible. Resolution is sufficient to assess surface gloss, spine cracking, and edge continuity. No glare or obstruction affects evaluation.

Observations:

- Strong, even color saturation across the cover field.
- Surface gloss is clearly visible.
- Along the spine edge, **fine vertical cracks** are present, each approximately **2–4 mm in length**, without long splits or exposed interior layers.
- The lower edge of the front cover appears continuous and intact.
- Corner rounding is present on all corners, approximately **3–5 mm** inward.
- No writing is visible on the front cover.

Overall Impression:

The front cover presents strongly, with **light spine cracking and minor handling wear**.

BACK COVER — OBSERVATIONS

Walt Disney's Comics and Stories – Vol. 15 No. 3 (December 1952)

Photo Condition & Quality:

Image is clear and evenly lit, fully framed with edges and corners visible. Resolution is sufficient to assess surface condition and markings.

FREE!

With each Christmas subscription to Walt Disney's Comics and Stories, this beautiful 28 page Donald Duck book illustrated in full color.

SIZE
3 3/4" x 6 3/4"

In addition a colorful gift card will be sent to each subscriber with your name shown as donor.

WALT DISNEY'S COMICS AND STORIES CONTAINS THE VERY BEST IN ART WORK, COLORING AND READABILITY. IT IS ENJOYED BY EVERYONE BOTH YOUNG AND OLD.

Approved by Parents and Educators Everywhere

A 1-Year Subscription--\$1.00 (12 Big Issues)	A 2-Year Subscription--\$1.75 (24 Big Issues)
A 3-Year Subscription--\$2.50 (36 Big Issues)	A 5-Year Subscription--\$4.00 (60 Big Issues)

THIS OFFER EXPIRES JANUARY 15, 1953

K. K. PUBLICATIONS, Inc. Dept. 12 POUGHKEEPSIE, N. Y.

Enclosed find ^{money order} _{check} for \$..... covering.....subscriptions for the 1954 Christmas Offer. (Please print name and address plainly.)

Send a.....year subscription to "Walt Disney's Comics and Stories" to:

Name.....
Street.....
City..... Zone.....
State.....
 Check here if this is a new subscription

Gift Card to read from.....
Donor's Name.....
Address.....

Send a.....year subscription to "Walt Disney's Comics and Stories" to:

Name.....
Street.....
City..... Zone.....
State.....
 Check here if this is a new subscription

Gift Card to read from.....
Donor's Name.....
Address.....

K. K. PUBLICATIONS, Inc. POUGHKEEPSIE, N. Y. K. K. PUBLICATIONS, Inc. POUGHKEEPSIE, N. Y.

Use plain sheet of paper for additional subscriptions, incorporating the above data.

Observations:

- Uniform age toning across the back cover.
- Paper surface appears flat, with no cockling or rippling.
- No visible writing or markings observed.
- Edge wear along the bottom and spine edges affects approximately **5–10 mm intermittently**.
- Corner rounding approximately **3–5 mm** inward.
- No paper loss observed.

Overall Impression:

The back cover remains intact with **uniform toning and light handling wear**.

INTERIOR PAGES — OBSERVATIONS

Walt Disney's Comics and Stories – Vol. 15 No. 3 (December 1952)

Photo Condition & Quality:

Images are sharp and evenly lit, showing full interior pages with margins visible. Resolution is sufficient to assess page color, edge condition, and artwork clarity.





Observations:

- Interior pages exhibit **tan to light-tan paper coloration**, darker toward the outer margins.
- **Fore-edge darkening** is visible on several pages, most noticeable toward the front; the darkened band measures approximately **5–12 mm inward** from the edge.
- Artwork remains clear with strong color and crisp linework.
- No interior tears or paper loss visible on the photographed pages.
- Minor corner bends visible on some pages, approximately **3–5 mm** inward.
- No interior writing observed.

Overall Impression:

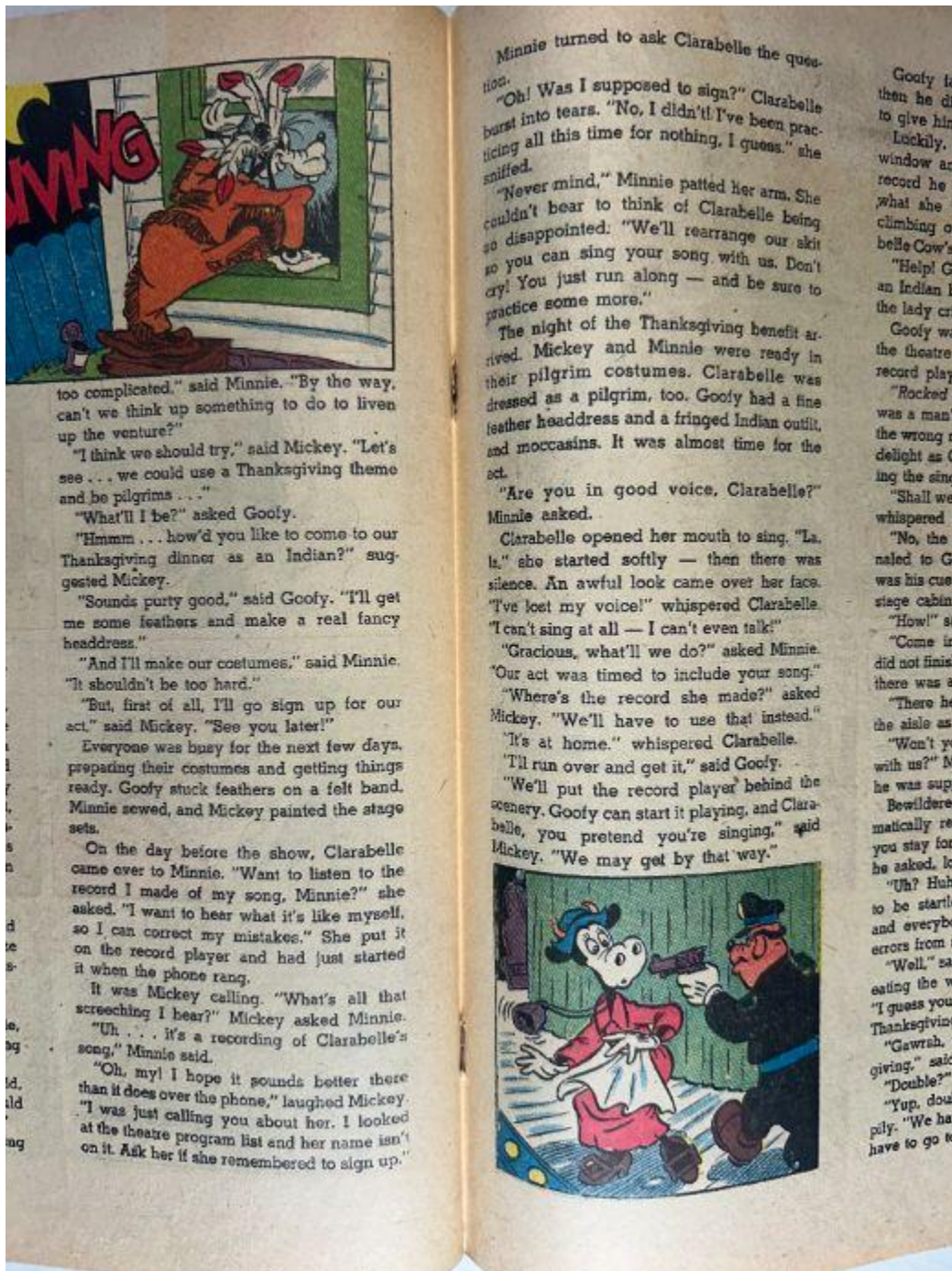
Interior pages are **clean and readable**, with **localized fore-edge darkening** and minor handling wear.

CENTERFOLD — OBSERVATIONS

Walt Disney's Comics and Stories — Vol. 15 No. 3 (December 1952)

Photo Condition & Quality:

Image is in focus and evenly lit, showing both pages and the central gutter clearly.



Observations:

- Both staple positions are visible.
- Surrounding paper shows **light stress at the staple locations**, without visible tearing or separation.
- The centerfold remains fully attached.
- Fold line shows light compression.

Overall Impression:

The centerfold remains **securely attached**, with **minor staple-area stress only**.

SPINE — OBSERVATIONS

Walt Disney's Comics and Stories – Vol. 15 No. 3 (December 1952)

Photo Condition & Quality:

Image is sharp and well lit, showing the full spine length clearly.

**Observations:**

- Spine is continuous with a **mild roll** visible.
- Several **fine vertical cracks** present, approximately **2–4 mm** in length.
- No long splits or exposed interior page layers observed.

Overall Impression:

The spine is structurally intact with **light cracking and mild roll**.

UPPER STAPLE — OBSERVATIONS

Walt Disney's Comics and Stories – Vol. 15 No. 3 (December 1952)

Photo Condition & Quality:

Macro image is sharp and evenly lit, clearly showing the staple and surrounding paper.



Observations:

- Metal staple is present and embedded.
- **Surface oxidation** visible as darkening on the metal.
- Surrounding paper remains intact with no tearing or slot enlargement.

Overall Impression:

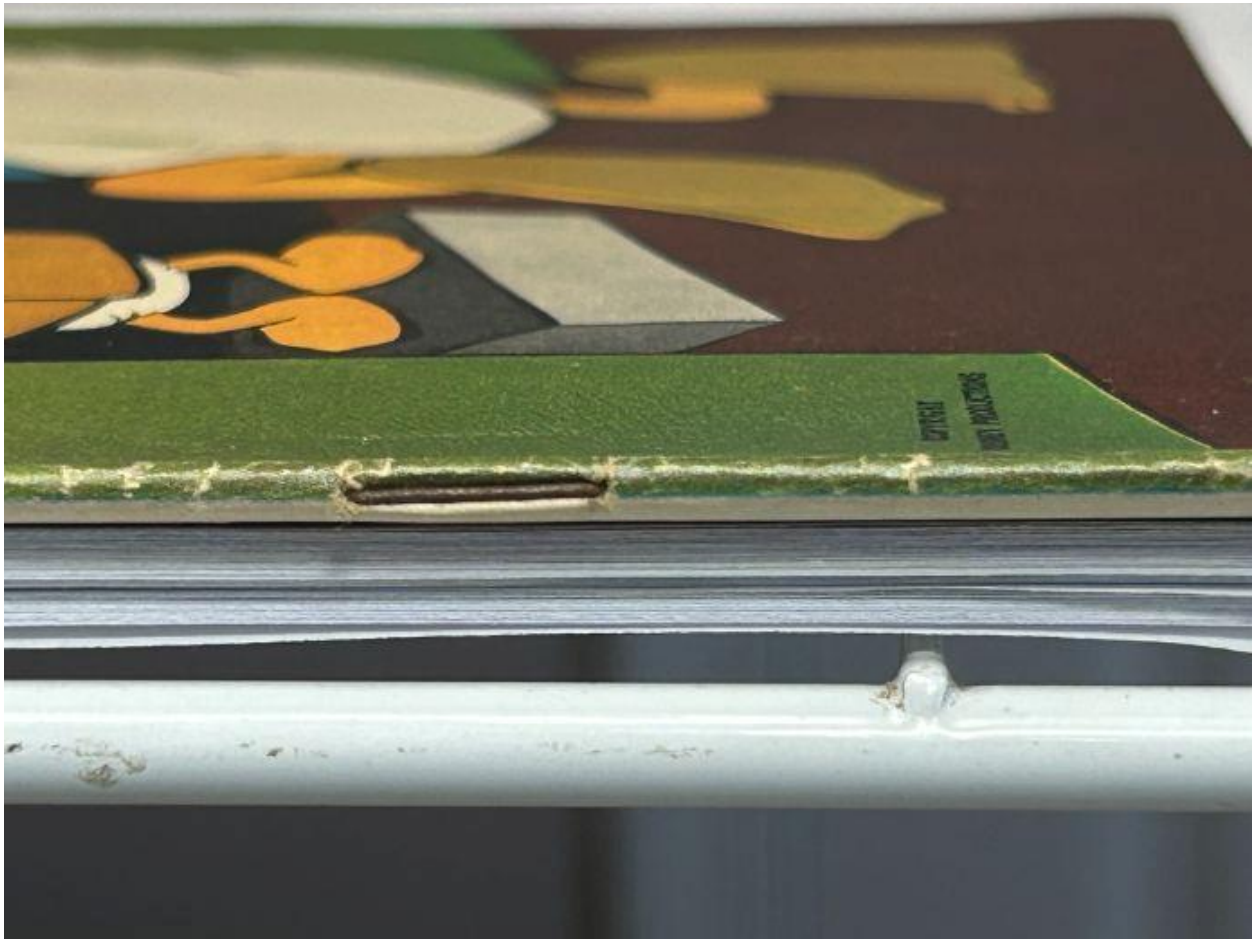
Upper staple is present with **surface-level oxidation only**.

LOWER STAPLE — OBSERVATIONS

Walt Disney's Comics and Stories – Vol. 15 No. 3 (December 1952)

Photo Condition & Quality:

Macro image is clear and properly framed.



Observations:

- Metal staple is present and embedded.
- Oxidation comparable to the upper staple.
- Surrounding paper intact with no visible tearing or slot enlargement.

Overall Impression:

Lower staple is present with **surface-level oxidation only**.

BRITTLINESS TEST — OBSERVATIONS

Walt Disney's Comics and Stories – Vol. 15 No. 3 (December 1952)

Photo Condition & Quality:

Image shows a **single interior page lifted above flat underlying pages**. Slight softness at the extreme corner does not impede evaluation of bend behavior.



Observations (confined to the lifted page):

- The lifted page bends upward in a **smooth, shallow arc**.
- No visible fiber fracture, splitting, or flaking along the bend line.
- Paper surface appears continuous at the point of flex.

Overall Impression:

The tested page demonstrates **retained flexibility** and does **not exhibit brittle behavior** under the observed flex.